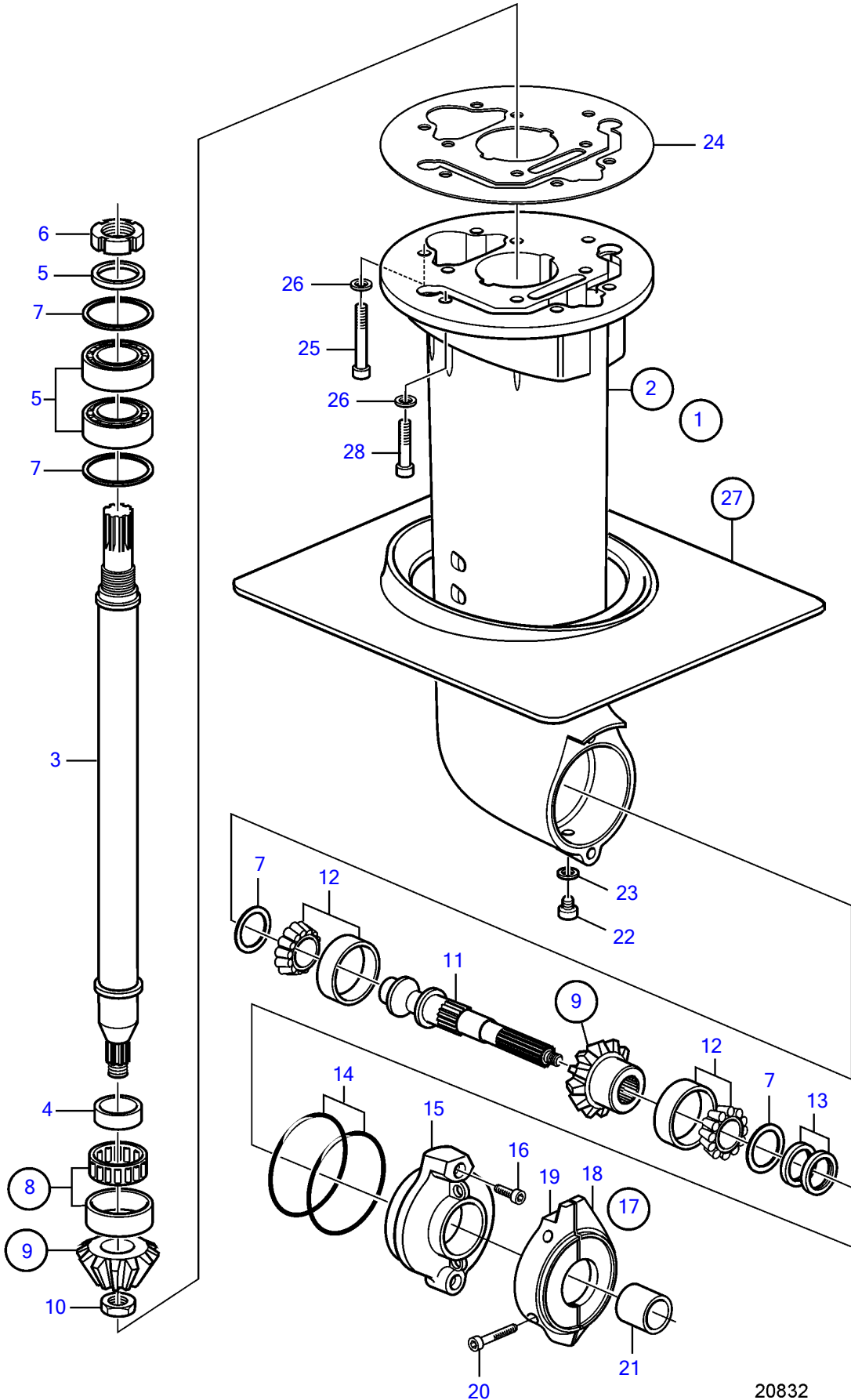


150S-A, 150S-B, 150SR-A, 150SR-B



150S-A, 150S-B, 150SR-A, 150SR-B

REF	PART NO.	QTY	DESCRIPTION	NOTES
1	889670	1	Gear housing	
2	3584493	1	• Gear housing	
3	889740	1	• Shaft	
4	889736	1	• Inner ring	
5	11041	2	• Roller bearing	
6	3586672	1	• Lock nut	
7	3586729	X	• Shim	TH=0.10mm
	3582874	X	• Shim	TH=0.15mm
	3582875	X	• Shim	TH=0,20mm
	3586730	X	• Shim	TH=0,50mm
	3586731	X	• Shim	TH=1,00mm
8	3586323	1	• Needle bearing	
9	3584421	1	• Gear set	
10	3808938	1	• Nut	
11	889742	1	• Propeller shaft	
12	183647	2	• Roller bearing	
13	3593663	2	• Sealing ring	
14	889672	2	• O-ring	
15	3584065	1	• Bearing housing	
16	946541	2	• Hex. socket screw	L=25mm
17	3888305	1	• Anode kit, zinc	
	3888306	1	• Anode kit, magnesium	
18		1	• • Anode	
19		1	• • Anode	Left
20	963688	2	• • Hex. socket screw	L=40mm
21	3582887	1	• Spacer	
22	3854539	1	• Plug	
23	3855081	1	• • O-ring	
24	3586693	1	Gasket	
25	963703	8	Hex. socket screw	
26	941670	10	Washer	
27	22303438	1	Mounting kit	
28	963700	2	Hex. socket screw	